



## **UNIT SKYLIGHT CATALOG**

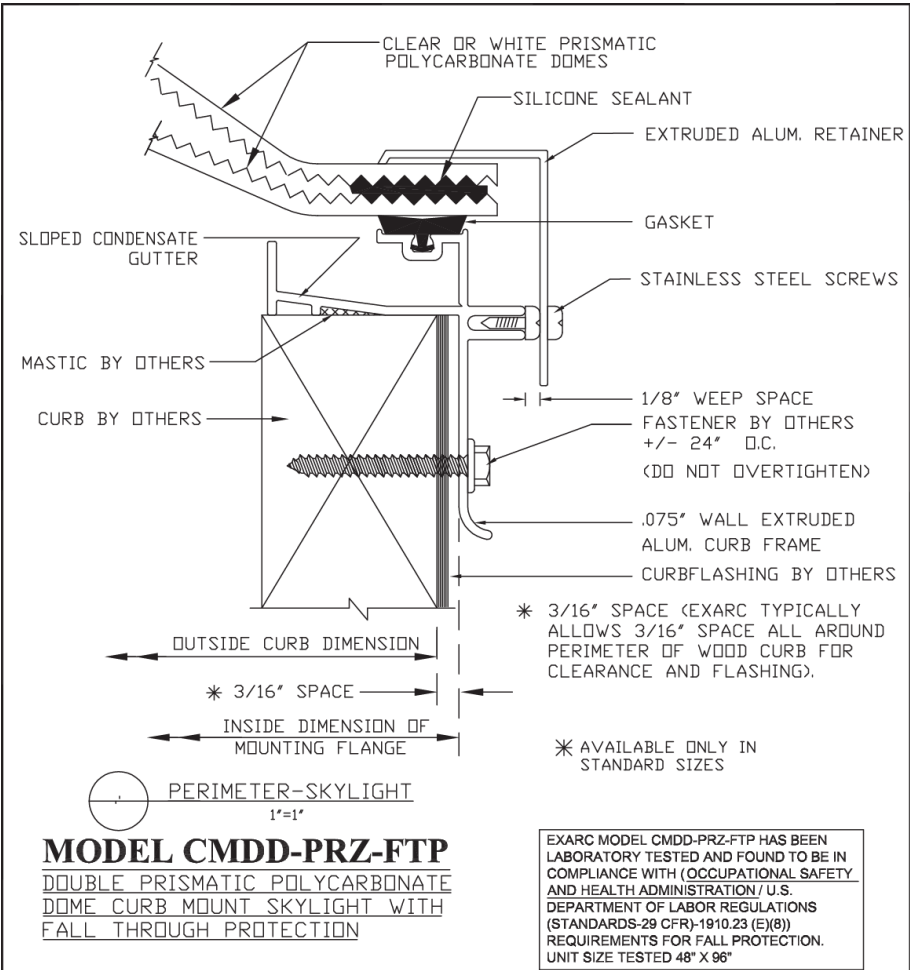
---

Prismatic Dome Skylights

## **Table of Contents**

- 8. **CMDD-PRZ-FTP:** Curb Mount, Double Prismatic Polycarbonate Dome, OSHA Compliant Fall Through Protection
- 9. **CMDD-TB-PRZ-FTP:** Curb Mount, Thermal Break Frame, Double Prismatic Polycarbonate Dome, OSHA Compliant Fall Through Protection
- 18. **ACST-9-PRZ-FTP:** Insulated Curb, 9" Frame Height, Double Prismatic Polycarbonate Dome, OSHA Compliant Fall Through Protection
- 22. **ICW-CMDD-PRZ-FTP:** 9" High Insulated Curb with Wood Nailer and Aluminum Liner & Separate Curb Mount Double Prismatic Dome with OSHA Compliant Fall Through Protection
- 25. **CMDD-PRZ-FTP-IC:** Curb Mount, Double Polycarbonate Prismatic Dome, OSHA Compliant Fall Through Protection Skylight and Insulated Curb with Interior Aluminum Curb Liner

8. **CMDD-PRZ-FTP: Curb Mount, Double Prismatic Polycarbonate Dome, OSHA**  
**Compliant Fall Through Protection**



**SPECIFICATIONS: MODEL CMDD-PRZ-FTP**

MODEL: CMDD-PRZ-FTP	EXARC DESIGN, FACTORY ASSEMBLED, ALUMINUM FRAME, CURB MOUNT SKYLIGHT WITH FALL THROUGH PROTECTION TO MOUNT ONTO SLOPED OR LEVEL FLASHED CURBS BY OTHERS. GLAZING TO BE THERMOFORMED, PRISMATIC POLYCARBONATE DOMES. ALUMINUM FRAME DESIGN WITH MITERED AND WELDED CORNERS TO HAVE SLOPED CONDENSATE GUTTER WITH PROVISION TO DRAIN ALL MOISTURE TO THE EXTERIOR.
GLAZING:	THERMOFORMED PRISMATIC POLYCARBONATE DOME (OUTER LITE) THERMOFORMED PRISMATIC POLYCARBONATE DOME (INNER LITE) COLOR OPTIONS: CLEAR/ CLEAR, CLEAR/ WHITE
FINISH:	MILL FINISH (STANDARD), BRONZE PAINT (POWDER COAT) OPTIONAL
ALUMINUM:	EXTRUDED 6063-T5, GLAZING FRAME .075", GLAZING RETAINER .065"
FASTENERS:	STAINLESS STEEL AT GLAZING CAPS. ALL FASTENERS NATURAL FINISH.
GASKET:	EXTRUDED EPDM (BLACK)
SHIPPING:	FACTORY ASSEMBLED UNITS
INSTALLATION:	BY OTHERS

DESIGN:	DESIGN LOADS PER LOCAL CODES OR PER PROJECT SPECIFICATIONS
---------	--

SAFETY: FTP-FALL THROUGH PROTECTION	OSHA COMPLIANT FALL THROUGH PROTECTION AND BREAKAGE - EXARC MODEL CMDD-PRZ-FTP HAS BEEN LABORATORY TESTED AND FOUND TO BE IN COMPLIANCE WITH (OCCUPATIONAL SAFETY AND HEALTH ADMINISTRATION / U.S. DEPARTMENT OF LABOR REGULATIONS (STANDARDS-29 CFR)-1910.23 (E)(8)) REQUIREMENTS FOR FALL PROTECTION. UNIT SIZE TESTED 48" X 96"
--	---

STANDARD SIZES:	UNIT NO.	OUT SIDE CURB DIMENSIONS	NOTE: EXARC MODEL CMDD-PRZ-FTP HAS BEEN LABORATORY TESTED AND FOUND TO BE WITHIN THE RECOMMENDED PERFORMANCE VALUES FOR THE FOLLOWING TESTS: - AIR, WATER AND STRUCTURAL TESTING (AAMA/WDMA/CSA101/LS.2/A440) USING ASTM E 283, ASTM E 330, AND ASTM E 331 TEST METHODS  -ASTM F588 FORCED ENTRY RESISTANCE  -FM 4431 - SIMULATED HAIL IMPACT RESISTANCE TEST USING 2" FREEZER ICE BALLS FIRED AT THE SAMPLE SKYLIGHT
	4848	47" X 47"	
	4872	44" X 71"	
	4896	47" X 95"	

ORDERING INFORMATION:	INDICATE THE FOLLOWING: OUTSIDE CURB DIMENSIONS	GLAZING COLOR-  QUANTITY
-----------------------	--	--------------------------------



**EXARC SKYLIGHTS, INC.**  
3793-B NORTH PEACHTREE RD.  
CHAMBLEE, GA 30341  
WEBSITE: [www.exarcskylights.com](http://www.exarcskylights.com)

770-451-4352  
800-247-5934  
FAX: 770-451-4934  
EMAIL: [info@exarcskylights.com](mailto:info@exarcskylights.com)

PROJECT: \_\_\_\_\_ DATE: \_\_\_\_\_

CONTRACTOR: \_\_\_\_\_

PAGE 1 OF 2



**EXARC SKYLIGHTS, INC.**  
3793-B NORTH PEACHTREE RD.  
CHAMBLEE, GA 30341  
WEBSITE: [www.exarcskylights.com](http://www.exarcskylights.com)

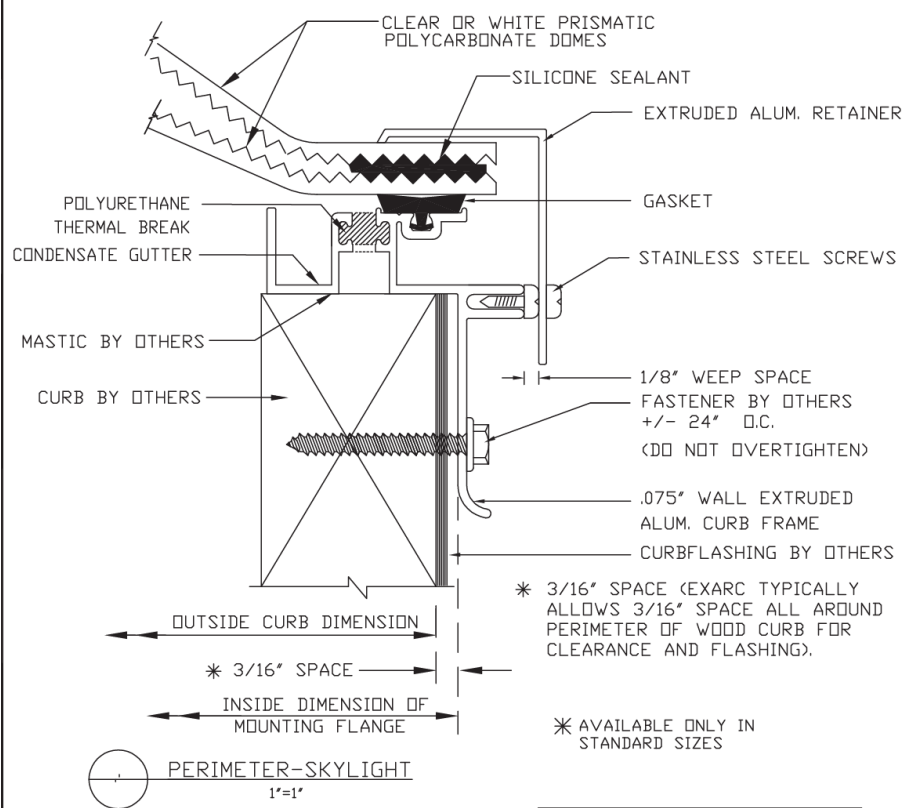
770-451-4352  
800-247-5934  
FAX: 770-451-4934  
EMAIL: [info@exarcskylights.com](mailto:info@exarcskylights.com)

PROJECT: \_\_\_\_\_ DATE: \_\_\_\_\_

CONTRACTOR: \_\_\_\_\_

PAGE 2 OF 2

# 9. CMDD-TB-PRZ-FTP: Curb Mount, Double Prismatic Polycarbonate Dome, OSHA Compliant Fall Through Protection



**MODEL CMDD-TB-PRZ-FTP**  
DOUBLE PRISMATIC POLYCARBONATE  
DOME CURB MOUNT SKYLIGHT WITH  
FALL THROUGH PROTECTION

EXARC MODEL CMDD-PRZ-FTP HAS BEEN LABORATORY TESTED AND FOUND TO BE IN COMPLIANCE WITH (OCCUPATIONAL SAFETY AND HEALTH ADMINISTRATION / U.S. DEPARTMENT OF LABOR REGULATIONS (STANDARDS-29 CFR)-1910.23 (E)(8)) REQUIREMENTS FOR FALL PROTECTION. UNIT SIZE TESTED 48" X 96"

## SPECIFICATIONS: MODEL CMDD-TB-PRZ-FTP

MODEL: CMDD-PRZ-FTP	EXARC DESIGN, FACTORY ASSEMBLED, THERMAL BREAK ALUMINUM FRAME, CURB MOUNT SKYLIGHT WITH FALL THROUGH PROTECTION TO MOUNT ONTO SLOPED OR LEVEL FLASHED CURBS BY OTHERS. GLAZING TO BE THERMOFORMED, PRISMATIC POLYCARBONATE DOMES. ALUMINUM FRAME DESIGN WITH MITERED AND WELDED CORNERS TO HAVE PROVISION TO DRAIN ALL MOISTURE TO THE EXTERIOR.
GLAZING:	THERMOFORMED PRISMATIC POLYCARBONATE DOME (OUTER LITE) THERMOFORMED PRISMATIC POLYCARBONATE DOME (INNER LITE) COLOR OPTIONS: CLEAR/ CLEAR, CLEAR/ WHITE
FINISH:	MILL FINISH (STANDARD)
ALUMINUM:	EXTRUDED 6063-T5, GLAZING FRAME .075", GLAZING RETAINER .065"
FASTENERS:	STAINLESS STEEL AT GLAZING CAPS. ALL FASTENERS NATURAL FINISH.
GASKET:	EXTRUDED EPDM (BLACK)
SHIPPING:	FACTORY ASSEMBLED UNITS
INSTALLATION:	BY OTHERS

DESIGN:	DESIGN LOADS PER LOCAL CODES OR PER PROJECT SPECIFICATIONS
---------	--

SAFETY: FTP-FALL THROUGH PROTECTION	OSHA COMPLIANT FALL THROUGH PROTECTION AND BREAKAGE - EXARC MODEL CMDD-PRZ-FTP HAS BEEN LABORATORY TESTED AND FOUND TO BE IN COMPLIANCE WITH (OCCUPATIONAL SAFETY AND HEALTH ADMINISTRATION / U.S. DEPARTMENT OF LABOR REGULATIONS (STANDARDS-29 CFR)-1910.23 (E)(8)) REQUIREMENTS FOR FALL PROTECTION. UNIT SIZE TESTED 48" X 96"
--	---

STANDARD SIZES:	UNIT NO.	OUT SIDE CURB DIMENSIONS
	4848	47" X 47"
	4872	44" X 71"
	4896	47" X 95"

NOTE:  
EXARC MODEL CMDD-PRZ-FTP HAS BEEN LABORATORY TESTED AND FOUND TO BE WITHIN THE RECOMMENDED PERFORMANCE VALUES FOR THE FOLLOWING TESTS:  
- AIR, WATER AND STRUCTURAL TESTING (AAMA/WDMA/CSA101/LS2/A440) USING ASTM E 283, ASTM E 330, AND ASTM E 331 TEST METHODS  
-ASTM F588 FORCED ENTRY RESISTANCE  
-FM 4431 - SIMULATED HAIL IMPACT RESISTANCE TEST USING 2" FREEZER ICE BALLS FIRED AT THE SAMPLE SKYLIGHT

ORDERING INFORMATION:	INDICATE THE FOLLOWING: OUTSIDE CURB DIMENSIONS	GLAZING COLOR-  QUANTITY
-----------------------	--	--------------------------------



**EXARC SKYLIGHTS, INC.**  
3793-B NORTH PEACHTREE RD.  
CHAMBLEE, GA 30341  
WEBSITE: [www.exarcskylights.com](http://www.exarcskylights.com)

770-451-4352  
800-247-5934  
FAX: 770-451-4934  
EMAIL: [info@exarcskylights.com](mailto:info@exarcskylights.com)

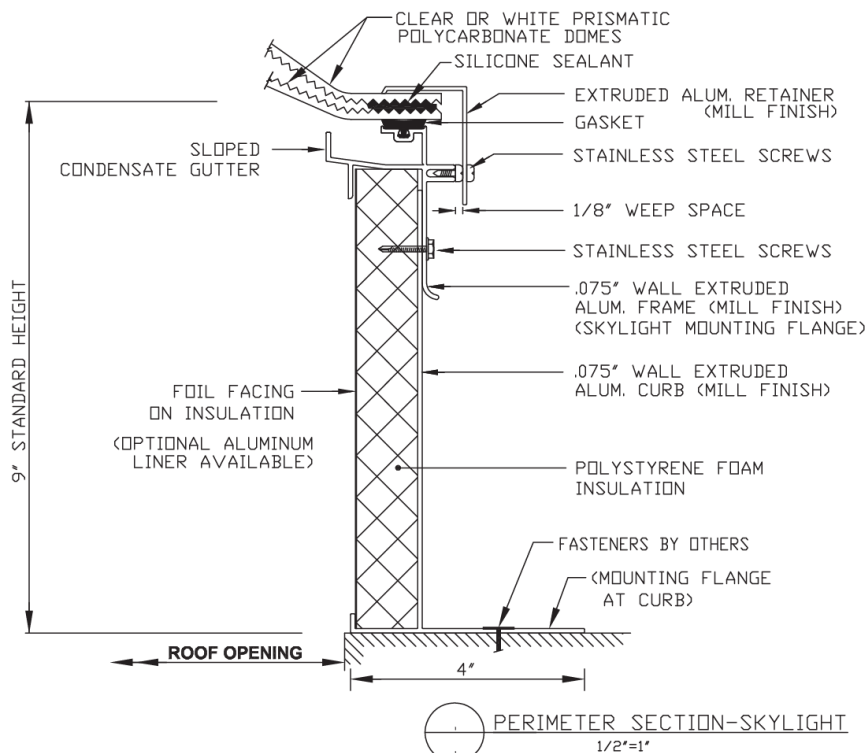


**EXARC SKYLIGHTS, INC.**  
3793-B NORTH PEACHTREE RD.  
CHAMBLEE, GA 30341  
WEBSITE: [www.exarcskylights.com](http://www.exarcskylights.com)

770-451-4352  
800-247-5934  
FAX: 770-451-4934  
EMAIL: [info@exarcskylights.com](mailto:info@exarcskylights.com)

PROJECT:	DATE:	PAGE 1 OF 2
CONTRACTOR:		PAGE 2 OF 2

# 18. ACST-9-PRZ-FTP: Insulated Curb, 9" Frame Height, Double Prismatic Polycarbonate Dome, OSHA Compliant Fall Through Protection



## MODEL ACST-9-PRZ-FTP DOUBLE PRISMATIC POLYCARBONATE DOME SKYLIGHT WITH INSULATED CURB AND FALL THROUGH PROTECTION

EXARC'S MODEL ACST-9, IS A UNIT SKYLIGHT (CMDD) WITH AN INTEGRAL INSULATED ALUMINUM CURB. THE CURB AND SKYLIGHT ARE PERMANENTLY ATTACHED AT THE FACTORY AND ARE NOT DESIGNED FOR FIELD DISASSEMBLY BY OTHERS. CURB FLASHING BY OTHERS MUST TERMINATE BELOW THE BOTTOM EDGE OF THE SKYLIGHT MOUNTING FLANGE. IF IN FACT THE PROJECT FLASHING DESIGN AT THE SKYLIGHT CURB REQUIRES THE FLASHING TO EXTEND UP AND UNDER THE SKYLIGHT MOUNTING FLANGE, PLEASE INDICATE ON THE DRAWING AND EXARC CAN SUPPLY AN APPROPRIATE TYPE CURB / SKYLIGHT ATTACHMENT DETAIL.

EXARC MODEL CMDD-PRZ-FTP HAS BEEN LABORATORY TESTED AND FOUND TO BE IN COMPLIANCE WITH (OCCUPATIONAL SAFETY AND HEALTH ADMINISTRATION/ U.S. DEPARTMENT OF LABOR REGULATIONS (STANDARDS-29 CFR)-1910.23 (E)(8) REQUIREMENTS FOR FALL PROTECTION. 10/15/07. UNIT SIZE TESTED 48" X 96"

## SPECIFICATIONS: MODEL ACST-9-PRZ-FTP

MODEL: ACST-9-PRZ-FTP	EXARC DESIGN, FACTORY ASSEMBLED, ALUMINUM FRAME, SELF CURBING COMMERCIAL SKYLIGHT WITH FALL THROUGH PROTECTION TO FIT OVER SPECIFIED SIZE ROOF OPENING. GLAZING TO BE THERMOFORMED DOMES, ALUMINUM FRAME DESIGN TO HAVE A SLOPED CONDENSATION GUTTER WITH PROVISION TO WEEP MOISTURE TO THE EXTERIOR AND AN INTEGRAL INSULATED CURB WITH INTERIOR FOIL THERMAL LINER. 2-3/4" WIDE MOUNTING FLANGE ALL AROUND THE PERIMETER BASE. OVERALL SKYLIGHT FRAME STANDARD HEIGHT 9" (AVAILABLE FROM 6" TO 9") OPTIONAL ALUMINUM LINER AVAILABLE FOR INTERIOR OF CURB.
GLAZING:	THERMOFORMED PRISMATIC POLYCARBONATE DOME (OUTER LITE) THERMOFORMED PRISMATIC POLYCARBONATE DOME (INNER LITE) COLOR OPTIONS: CLEAR/ CLEAR, CLEAR/ WHITE
FINISH:	MILL FINISH (STANDARD)
ALUMINUM:	EXTRUDED 6063-T5, CURB AND GLAZING FRAME .075", GLAZING RETAINER .065"
FASTENERS:	STAINLESS STEEL. ALL FASTENERS NATURAL FINISH.
GASKET:	EXTRUDED EPDM (BLACK)
SHIPPING:	FACTORY ASSEMBLED UNITS, READY TO MOUNT OVER ROOF OPENING BY OTHERS
INSTALLATION:	BY OTHERS (MOUNTING FASTENERS BY OTHERS)

DESIGN:	DESIGN LOADS PER LOCAL CODES OR PER PROJECT SPECIFICATIONS
---------	--

SAFETY: FTP-FALL THROUGH PROTECTION	OSHA COMPLIANT FALL THROUGH PROTECTION AND BREAKAGE - EXARC MODEL CMDD-PRZ-FTP HAS BEEN LABORATORY TESTED AND FOUND TO BE IN COMPLIANCE WITH (OCCUPATIONAL SAFETY AND HEALTH ADMINISTRATION / U.S. DEPARTMENT OF LABOR REGULATIONS (STANDARDS-29 CFR)-1910.23 (E)(8) REQUIREMENTS FOR FALL PROTECTION. UNIT SIZE TESTED 48" X 96"
--	---

STANDARD SIZES:	UNIT NO.	ROOF OPENING (RECTANGULAR)
	4848	44" X 44"
	4872	44" X 68"
	4896	44" X 92"

NOTE:  
EXARC MODEL CMDD-PRZ-FTP HAS BEEN LABORATORY TESTED AND FOUND TO BE WITHIN THE RECOMMENDED PERFORMANCE VALUES FOR THE FOLLOWING TESTS:  
- AIR, WATER AND STRUCTURAL TESTING (AAMA/WDMA/CSA101/LS2/A440) USING ASTM E 283, ASTM E 330, AND ASTM E 331 TEST METHODS  
-ASTM F588 FORCED ENTRY RESISTANCE  
-FM 4431 - SIMULATED HAIL IMPACT RESISTANCE TEST USING 2" FREEZER ICE BALLS FIRED AT THE SAMPLE SKYLIGHT

ORDERING INFORMATION:	INDICATE THE FOLLOWING: ROOF OPENING SIZE - GLAZING MATERIAL REQUIRED -	GLAZING COLOR  QUANTITY-
-----------------------	---	--------------------------------



EXARC SKYLIGHTS, INC.  
3793-B NORTH PEACHTREE RD.  
CHAMBLEE, GA 30341

WEBSITE: [www.exarcskylights.com](http://www.exarcskylights.com)

770-451-4352  
800-247-5934  
FAX: 770-451-4934

EMAIL: [info@exarcskylights.com](mailto:info@exarcskylights.com)

PROJECT:  
CONTRACTOR:

DATE:

PAGE 1 OF 2



EXARC SKYLIGHTS, INC.  
3793-B NORTH PEACHTREE RD.  
CHAMBLEE, GA 30341

WEBSITE: [www.exarcskylights.com](http://www.exarcskylights.com)

770-451-4352  
800-247-5934  
FAX: 770-451-4934

EMAIL: [info@exarcskylights.com](mailto:info@exarcskylights.com)

PROJECT:  
CONTRACTOR:

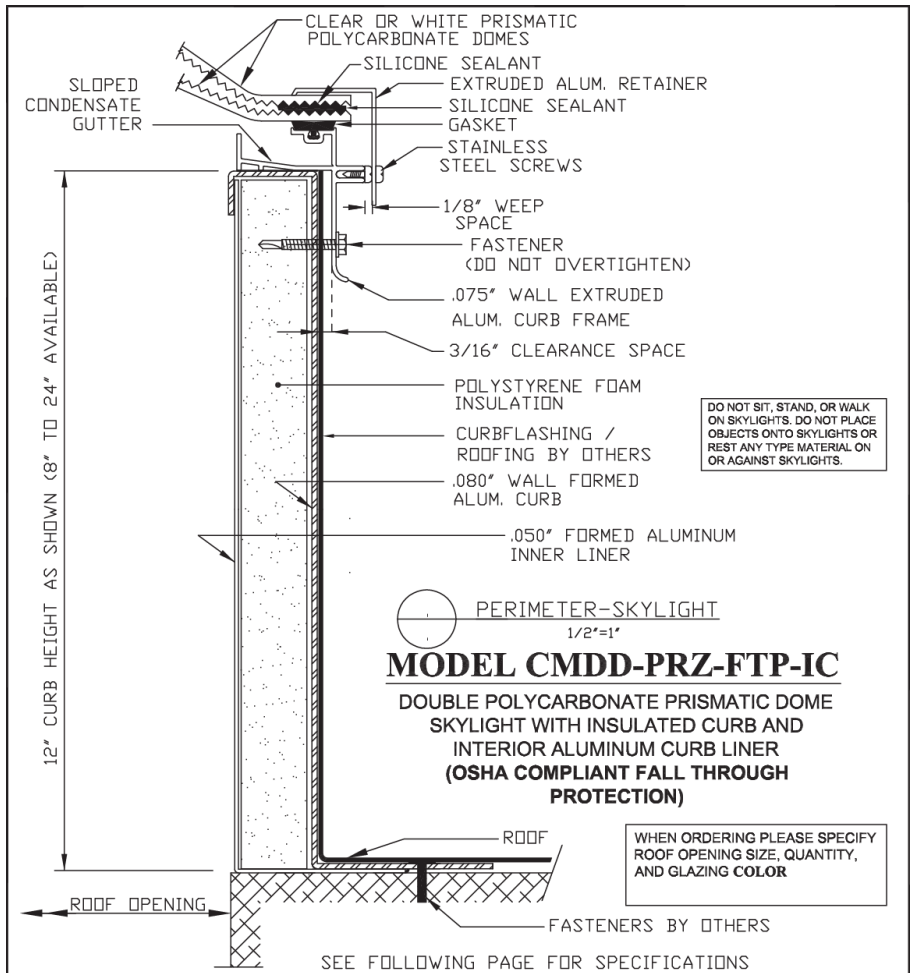
DATE:

PAGE 2 OF 2





# 25. CMDD-PRZ-FTP-IC: Curb Mount, Double Polycarbonate Prismatic Dome, OSHA Compliant Fall Through Protection Skylight and Insulated Curb with Interior Aluminum Curb Liner



SPECIFICATIONS: MODEL CMDD-PRZ-FTP-IC			
MODEL: CMDD-PRZ-FTP-IC		EXARC DESIGN, FACTORY ASSEMBLED, ALUMINUM FRAME, CURB MOUNT SKYLIGHT WITH THERMOFORMED, PRISMATIC POLYCARBONATE DOMES, TO MOUNT ONTO AN EXARC DESIGN, 12" HIGH INSULATED CURB, TO FIT OVER SPECIFIED SIZE ROOF OPENING.	
GLAZING:		THERMOFORMED DOME (OUTER LITE) - THICK PRISMATIC POLYCARBONATE THERMOFORMED DOME (INNER LITE) - THICK PRISMATIC POLYCARBONATE COLOR OPTIONS: CLEAR/CLEAR, CLEAR/WHITE	
FINISH:		MILL FINISH (STANDARD)	
ALUMINUM:		EXTRUDED 6063-T5, GLAZING FRAME .075", GLAZING RETAINER .065"	
FASTENERS:		STAINLESS STEEL AT GLAZING CAPS, ZINC PLATED AT STRUCTURAL CONNECTIONS. ALL FASTENERS NATURAL FINISH.	
GASKET:		EPDM (BLACK)	
SHIPPING:		FACTORY ASSEMBLED UNITS, READY TO MOUNT ONTO MODEL IC CURB BY EXARC.	
INSTALLATION:		BY OTHERS	
MODEL: IC INSULATED CURBS		EXARC DESIGN, FACTORY ASSEMBLED, 1-1/4" WIDE DOUBLE WALL, 12" HIGH, INSULATED ALUMINUM CURBS, 3" WIDE HORIZONTAL MOUNTING FLANGE ALL AROUND THE PERIMETER BASE OF THE CURB FOR FASTENING TO THE ROOF DECK. CURBS TO MOUNT OVER ROOF OPENINGS BY OTHERS. TOP OF CURBS TO BE FLAT TO RECEIVE EXARC SKYLIGHTS MODEL CMDD. OUTER CURB WALL CORNERS TO BE WELDED WATER TIGHT. CURBS TO BE SHIPPED UN-ATTACHED FROM SKYLIGHTS IN ORDER THAT CURBS CAN BE INSTALLED AND FLASHED BY OTHERS PRIOR TO SKYLIGHT PERMANENT ATTACHMENT TO CURBS.	
ALUMINUM:		OUTER CURB WALL - .080" THICK FORMED ALUMINUM (3003) INNER CURB WALL - .050" THICK FORMED ALUMINUM (3003)	
FINISH:		MILL FINISH ALUMINUM	
INSULATION:		EXPANDED POLYSTYRENE FOAM	
FASTENERS:		MOUNTING FASTENERS TO ROOF DECK BY OTHERS	
SHIPPING:		FACTORY ASSEMBLED, READY TO MOUNT OVER ROOF OPENING	
INSTALLATION:		BY OTHERS	
SAFETY: FTP-FALL THROUGH PROTECTION		OSHA COMPLIANT FALL THROUGH PROTECTION AND BREAKAGE - EXARC MODEL CMDD-PRZ-FTP HAS BEEN LABORATORY TESTED AND FOUND TO BE IN COMPLIANCE WITH (OCCUPATIONAL SAFETY AND HEALTH ADMINISTRATION / U.S. DEPARTMENT OF LABOR REGULATIONS (STANDARDS-29 CFR)-1910.23 (E)(8)) REQUIREMENTS FOR FALL PROTECTION. UNIT SIZE TESTED 48" X 96"	
STANDARD SIZES:	UNIT NO.	ROOF OPENING (RECTANGULAR)	EXARC MODEL CMDD-PRZ-FTP HAS BEEN LABORATORY TESTED AND FOUND TO BE WITHIN THE RECOMMENDED PERFORMANCE VALUES FOR THE FOLLOWING TESTS: - AIR, WATER AND STRUCTURAL TESTING (AAMA/WDMA/CSA101/LS2/A440) USING ASTM E 283, ASTM E 330, AND ASTM E 331 TEST METHODS  -ASTM F588 FORCED ENTRY RESISTANCE  -FM 4431 - SIMULATED HAIL IMPACT RESISTANCE TEST USING 2" FREEZER ICE BALLS FIRED AT THE SAMPLE SKYLIGHT
	4848	44" X 44"	
	4872	44" X 68"	
	4896	44" X 92"	



EXARC SKYLIGHTS, INC.

3793-B NORTH PEACHTREE RD.

CHAMBLEE, GA 30341

WEBSITE: [www.exarcskylights.com](http://www.exarcskylights.com)

770-451-4352

800-247-5934

FAX: 770-451-4934

EMAIL: [info@exarcskylights.com](mailto:info@exarcskylights.com)

25C



EXARC SKYLIGHTS, INC.

3793-B NORTH PEACHTREE RD.

CHAMBLEE, GA 30341

WEBSITE: [www.exarcskylights.com](http://www.exarcskylights.com)

770-451-4352

800-247-5934

FAX: 770-451-4934

EMAIL: [info@exarcskylights.com](mailto:info@exarcskylights.com)

25S